

ACCESSIBILITY OF THE CENT GARDES GYMNASIUM AND ITS ACCESS IN sèvres (92) - FRANCE

PUBLIC BUILDING : ACCESSIBILITY

CLIENT City of Sèvres

LOCATION Sèvres (92), France

Project Accessibility of the Cent Gardes Gymnasium and its access

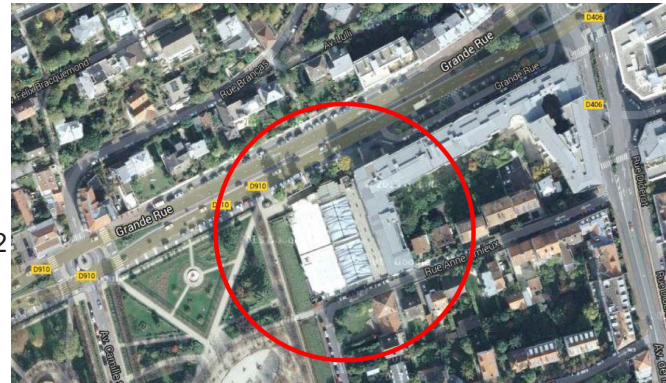
MISSION Architecture and Landscape

CONSULTANT AR ARCHITECTES - C.LOZA ARCHITECTURE, ACCESMETRIE 2

Area 700 m²

COST 400 000 €

DATE Project finished in 2016



Location of the gymnasium



Photo of an access with obstacles to the sport rooms

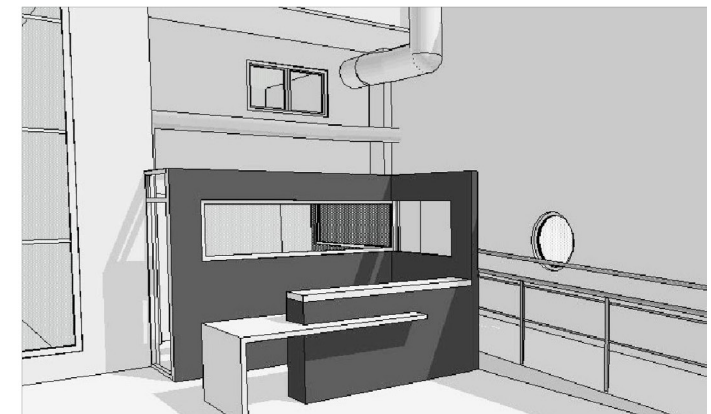
Résultats hors bâtiment	Indice d'accessibilité	Nombre d'obstacles
ENTREE PRINCIPALE - de la voirie au RDC bas	20%	4
ENTREE PMR - niveau voirie au RDC haut	0%	7

Résultats hors bâtiment	Indice d'accessibilité	Nombre d'obstacles
ACCUEIL - RDC bas	50%	2
CIRCULATION - RDC bas	0%	2
CIRCULATION PMR - RDC haut	0%	2
ESPACE MUSCULATION - RDC haut	37%	16
central	0%	4
CIRCULATION PMR - niveau -1 bas	0%	3
BUREAU ASSOCIATIF - niveau -1 bas	0%	4
ESPACE BUVETTE - niveau -1 bas	67%	1
ESPACE TRIBUNE - niveau -1	17%	6
ESPACE POLYVALENT - niveau -1 haut	0%	17
niveau -2	14%	21
niveau -2	27%	11

Résumé of the different levels of accessibility



Design of the entrance hall: Current state and projected state



The Cent Gardes Gymnasium is a type X public building built in 1989, with an area of 4 700m², dispatched on 3 different floors, 2 of which are underground. This gymnasium welcomes everyday a considerable number of children from different schools and adults from different sport associations in the neighborhood. The intervention here consists of the accessibility of the establishment, interior and exterior. Our design group is determined to identify every existing accessibility problems in order to deliver a public building that is accessible to everyone.