

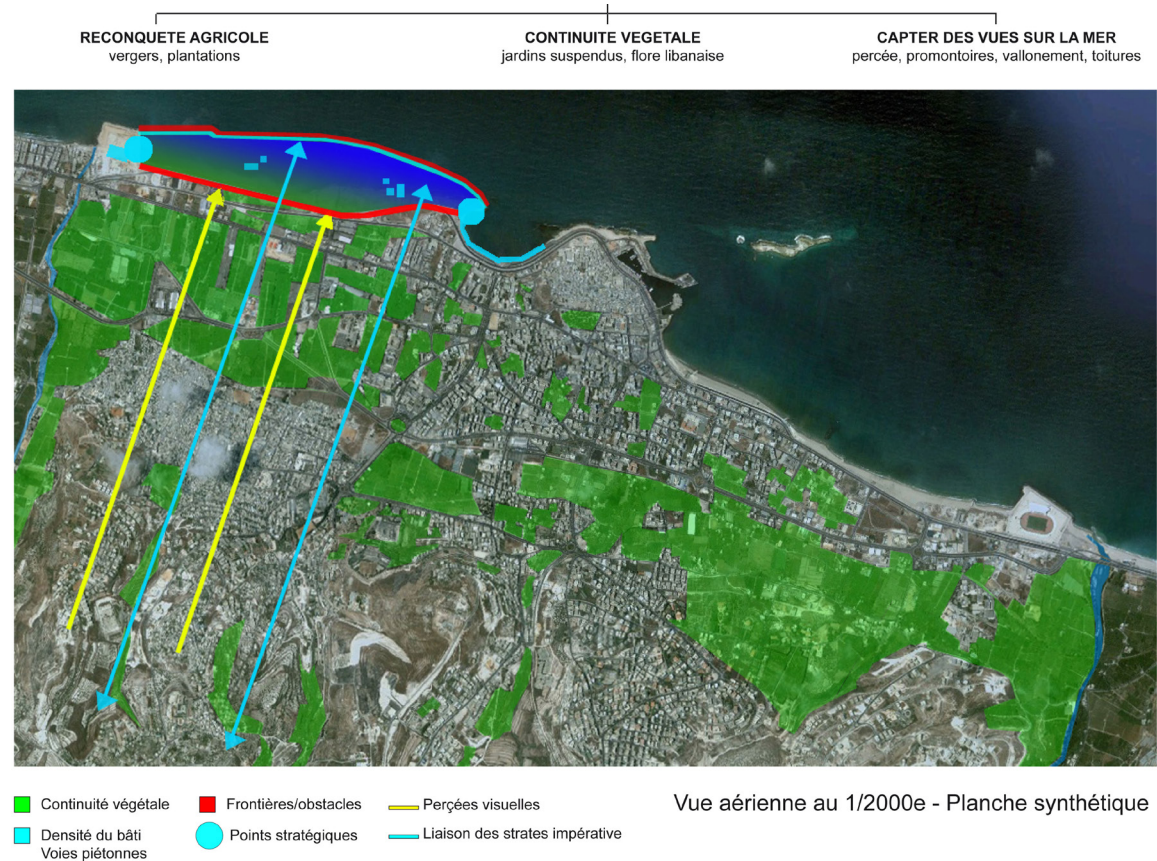
eco-transformation OF A LANDFIELD INTO AN ECOLOGIC PARK IN SAIDA - Lebanon

URBAN PLANNING AND LANDSCAPING: PARKS, HQE® APPROACH

Client	Municipality of SAIDA
Location	Saida, Lebanon
Project	Environmental landscaping
Mission	Urban planning design,
Design and	AR ARCHITECTES
Build	SUEZ environnementa local civil engineer contractor
area	140 000 m ²
cost	30 000 000 US Dollars
Date	July 2012



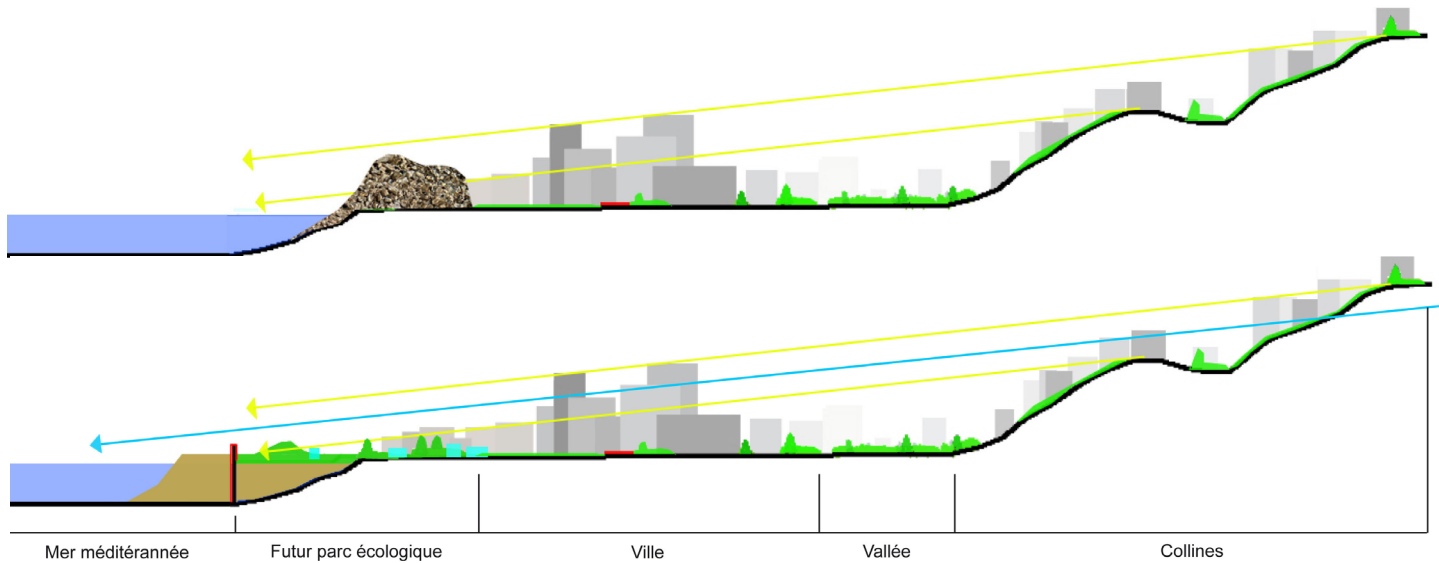
Photography of the landfield in front of the sea



Site analysis and intentions

The project takes place in Saïda, a city of 300 000 inhabitants in the south of Lebanon, local's historical ex-capital of Lebanon, located between the industrial and agricultural zone, on the south of the old city. The aim is to remove a big waste mountain measuring several meters high, 100 meters large, on a linear of 1 Km along the littoral.





Existing section

LITTORAL NORD
Luminosité ■ ■ ■ ■



Photographie du littoral nord



Infini

Liberté



Sable

Goudron

LITTORAL CENTRE
Luminosité ■ ■ ■ ■



Photographie du littoral centre



Historique

Liberté



Sable

Pierre

CENTRE MEDINA
Luminosité ■ ■ ■ ■



Photographie de la médina



Sur-densité

Nuisance sonore



Sable

Pierre

Project targets

The objectives of the project :

- Bury the waste in front of the sea.
- Create an ecological park in place of the polluted area.
- Open the project to visitors with educational tours.
- Create great links between the sea and the city, green places and the new park.

